



AMI Architectural
Metalwork
Installations

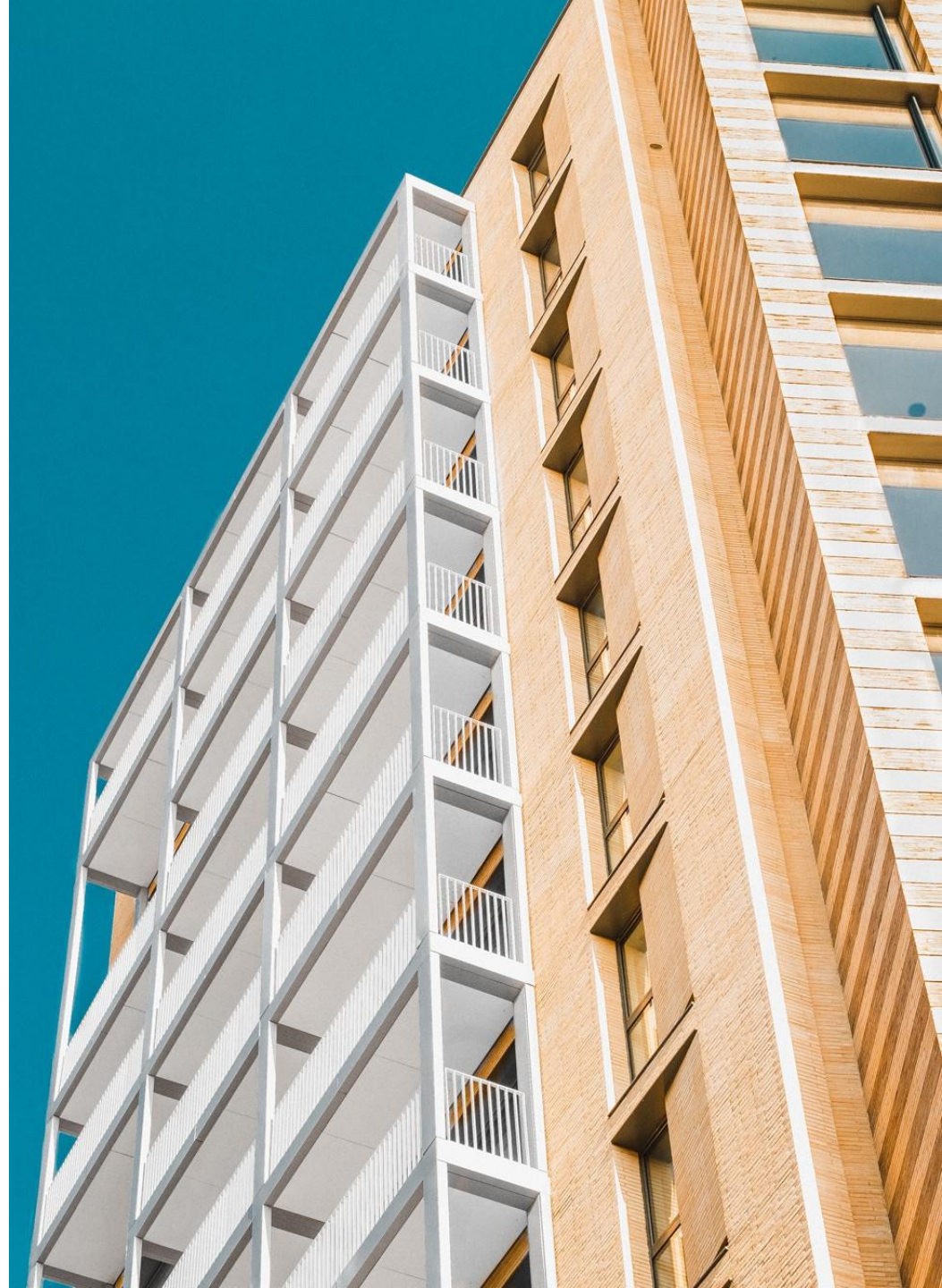
AN INTRODUCTION

AMI

Architectural Metalwork Installations

About Us

- One of the UK's leading architectural metalwork suppliers offering an efficient, cost effective end-to-end service that you can rely on.
- Formed in 2007 as a collaboration between like-minded individuals to specialise in the design, manufacture & installation of architectural metalwork including stair structures & balustrade, structural balconies, secondary steelwork, riser flooring and glazed canopies.
- Steady growth since inception with a current turnover of approximately £5m employing around 50 personnel and our own manufacturing facilities in Sheffield. Continual investment including larger premises, modern manufacturing systems and upgrading our transportation fleet.
- Numerous blue-chip clients providing repeat business due to our track record of turning projects around where others have failed to succeed. Our partnering approach, practical knowhow, quick turnaround and commitment to service means we always deliver. Our Clients constantly praise our flexibility and ability to react quickly to deliver change or additional work at pace in order to maintain program, an area we pride ourselves in.
- Experienced BIM proficient in-house design team fully conversant with TEKLA & 3D AutoCAD that can fit in seamlessly with any currently assembled design teams. We like to collaborate in as many areas as possible and become integrated with the design team as a partner – in order to manage out as many risks as possible for Clients.
- Structural advice, design and calculations are provided for all our products.
- Huge emphasis on consistent quality with our main aim to supersede all our competitors in this area, not just in our final bespoke products but also quality in the level of service we offer to our clients and customers.
- Each project undertaken by Architectural Metalwork Installations Ltd is assigned an experienced Project Manager giving the client a personal point of contact 24/7 if necessary.





ACCREDITATIONS

- CE Approved to Execution Class 3
- ISOQAR Registered & Audited Annually
- Constructionline Gold
- CHAS / SSiP
- Supply Chain Sustainability School Member
- Acclaim Accreditation

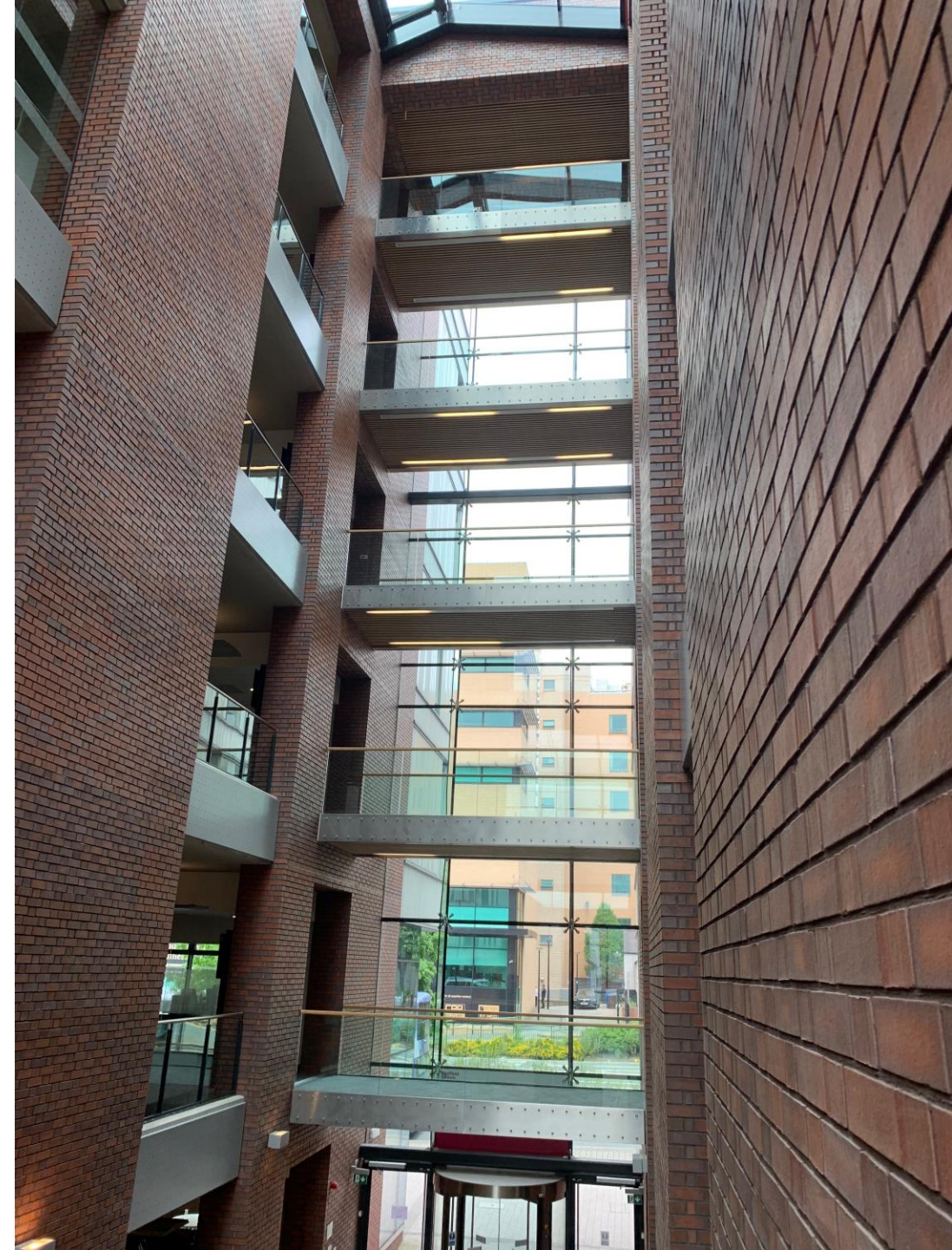


AMI

Architectural Metalwork Installations

HSEQ

- Nothing is more important than the health and safety of the people we employ and those around them. From our cutting-edge manufacturing facilities to delivery and installation, we always work to the highest standards of health and safety – and we're immensely proud of our safety record.
- All our employees hold current CSCS Cards and receive relevant trade and activity specific training. All projects are led by an experienced Supervisor with a minimum of SSSTS qualification or higher. All site teams are PASMA and IPAF trained and all Supervisors are trained first aiders. Safety first, every time.
- We are passionate about the environment and are committed to its conservation for current and future generations. We endeavour to minimise energy use, waste, packaging, noise and carbon emissions throughout our entire supply chain providing a more sustainable product as a result. This ethos is upheld by all our employees and suppliers who are actively engaged and encouraged to make a positive contribution to this aim.
- Our products and processes, using mainly steel and glass, are highly recyclable and easily segregated to enable us to achieve an extremely low level of waste during manufacture, which is all recycled at source.
- We realise that our Clients need guaranteed quality on time, every time. We've built our business with this ethos from day one and continually strive to improve how we do things. We provide an efficient end-to-end service that you can rely on.
- From inception to completion we ensure all procurement, manufacture, delivery and installation is undertaken following our bespoke quality procedures, all backed by ISOQAR accreditation and Gold membership of Constructionline. We check and check again so that you don't have to.
- Our in-house quality management system has been developed to reflect our intentions and complies with ISO 9001 & EN 1090. Nothing stands still in our industry, so our systems are continually monitored, reviewed and amended to suit current demands. We are CE certified to execution class 3 and all relevant products are CE marked accordingly.





Current Projects

Project	Package	Value	Location	Duration	Client
Hounslow House	Balcony balustrade, stairs, secondary steel	£1m	London	Oct 18 – Mar 20	Bennetts
MECD	Stairs, balustrade, riser floors, secondary steel	£5m	Manchester	Aug 18 – Sep 20	Balfour Beatty Major Projects
Faculty of Social Sciences	Feature stair, balustrade	£400k	Sheffield	Jan 20 – Aug 20	BAM
Portland Street	Feature Stair, Balustrade & secondary steel	£400k	Manchester	Feb 20 – Sep 20	Russells
Windsor Castle	Exterior balustrade	£200k	London	Jan 20 – Mar 20	Feltham
Ark Blake	Feature stair, balustrade	£100k	London	Nov 19 – Mar 20	Wates



Similar Projects Recently Completed

Project	Package	Value	Location	Duration	Client
Camden Lock Village	Structural Balconies, Stairs & Balustrade	£1.5m	London	Feb18 - May19	Mace
Diamond Building	Stairs & Balustrade	£1.2m	Sheffield	Apr 17 - Mar 18	Balfour Beatty Major Projects
Three Snowhill	Stairs, Balustrade & secondary steel	£400k	Birmingham	May 19 – Jan 20	BAM
Cavendish Project	Stairs & Balustrade	£1.3m	Sheffield	Feb 18 – Feb 19	BAM
Southwark Street	Structural Balconies	£400k	London	Nov 18 – Mar 19	RI Design & Build
NAIC	Roof plant steel, Balustrade, secondary steel	£2m	Warwick	Jun 17 - Jul 18	Balfour Beatty Major Projects
St Ann's Residential	Balcony Balustrades	£300k	London	Feb 18 - Sep 18	Henry Construction
Schools Framework	Stairs & Balustrade	£3m	Various	2017	Wates

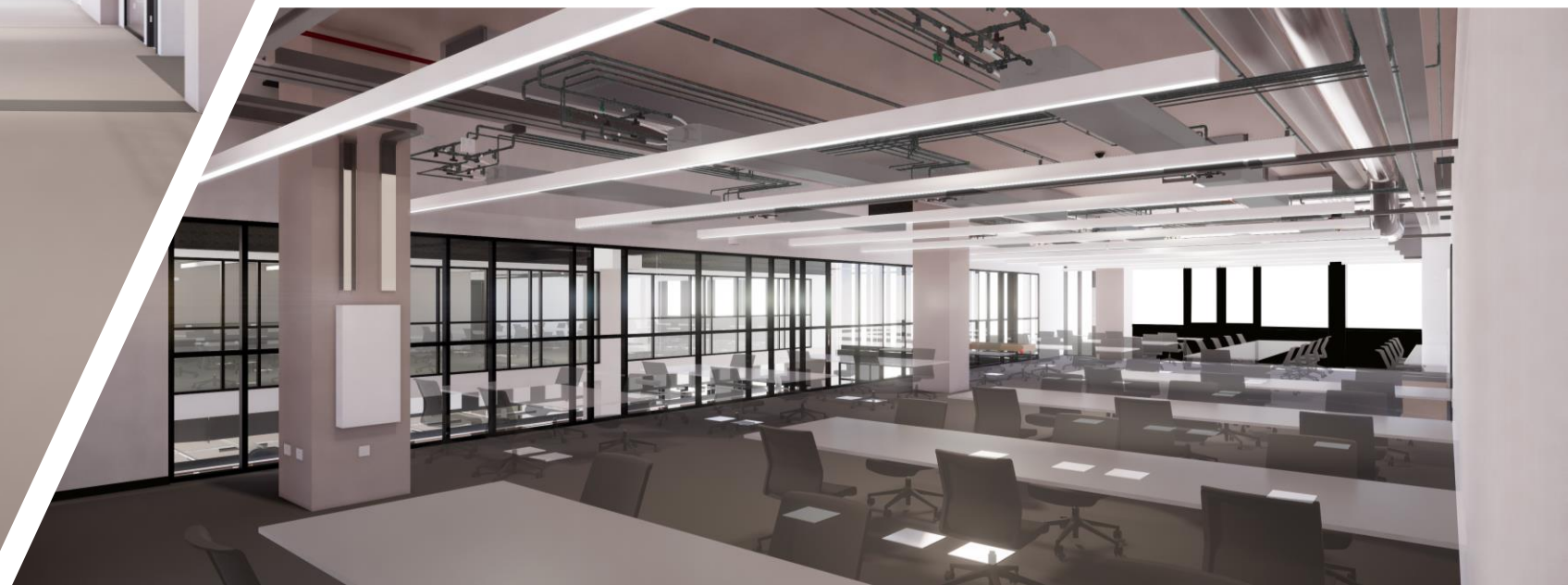
CASE STUDY — ENGINEERING CAMPUS

CLIENT	BALFOUR BEATTY MAJOR PROJECTS
COMMENCED	AUG 18
COMPLETED	ONGOING
SCOPE	STAIRS & BALUSTRADE, RISER FLOORS, EXTENSIVE SECONDARY STEEL
PACKAGE VALUE	£5M
LOCATION	MANCHESTER
CONTACT	RICHARD AYRES 07557 191493 RICHARD.AYRES@BALFOURBEATTY.COM










A large-scale construction project for a multi-story building. The image shows several levels of concrete stairs and walkways under construction. Scaffolding and metal railings are visible on the upper levels. A banner for 'Balfour Beatty' and 'MECD' is visible in the background. The overall scene is dimly lit, with some construction equipment and materials scattered on the lower levels.

MECD WORK IN PROGRESS



MECD WORK IN PROGRESS

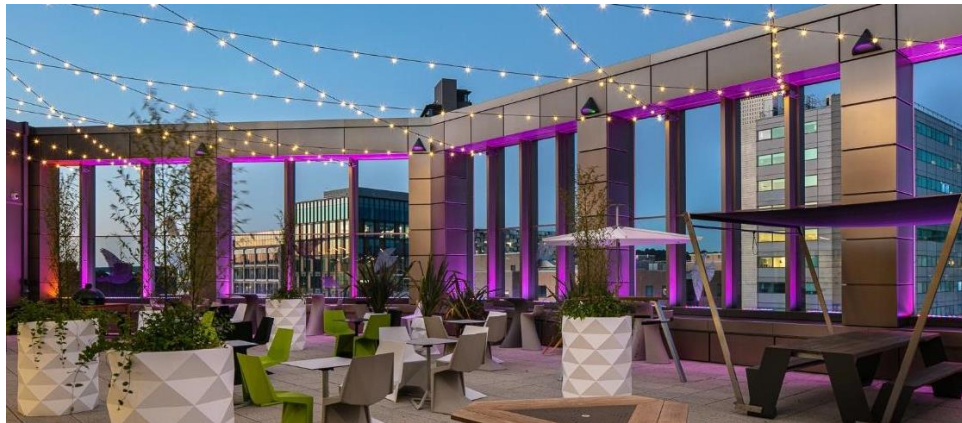
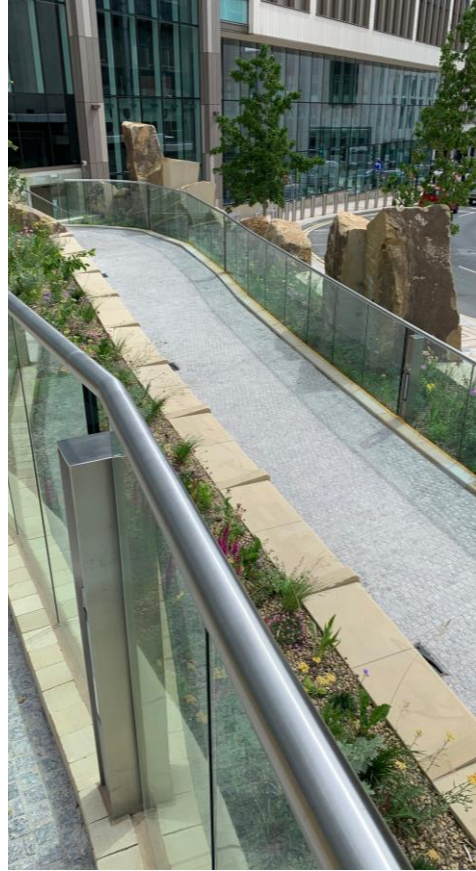
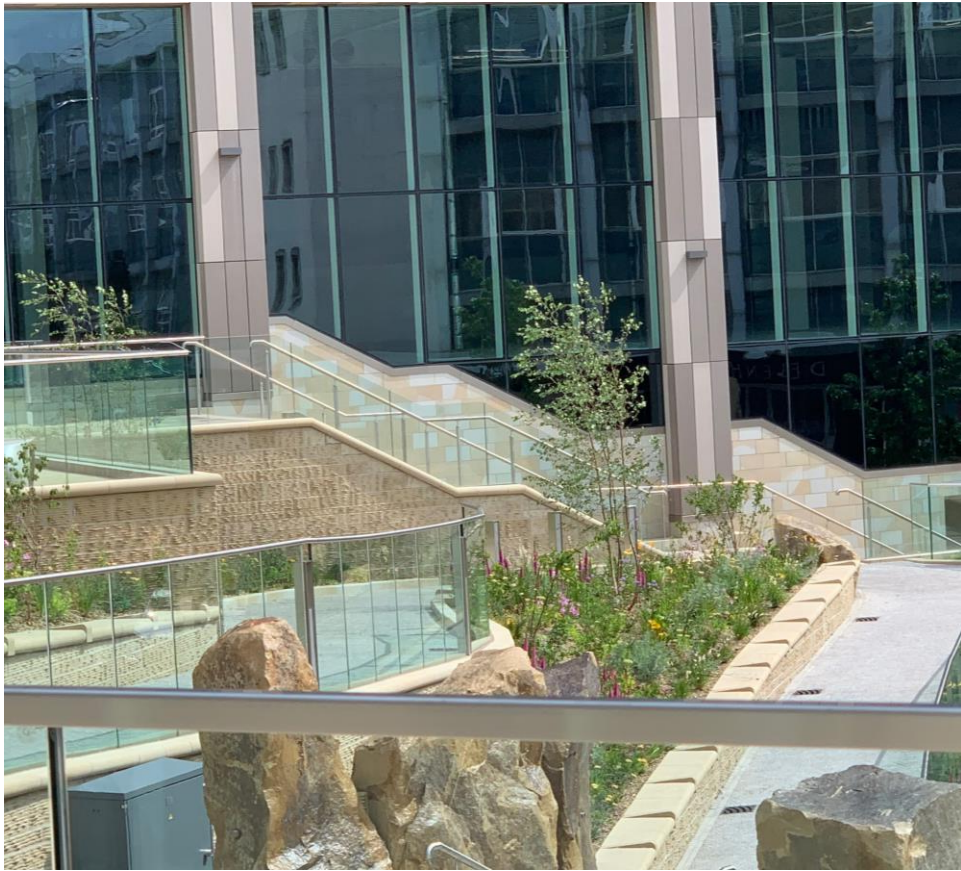


CASE STUDY — PROJECT CAVENDISH

CLIENT	BAM
COMMENCED	FEB 18
COMPLETED	FEB 19
SCOPE	STAIRS & BALUSTRADE
PACKAGE VALUE	£1.3M
LOCATION	SHEFFIELD
CONTACT	DAVE MARSH 07970 004645 DMARSH@BAM.CO.UK







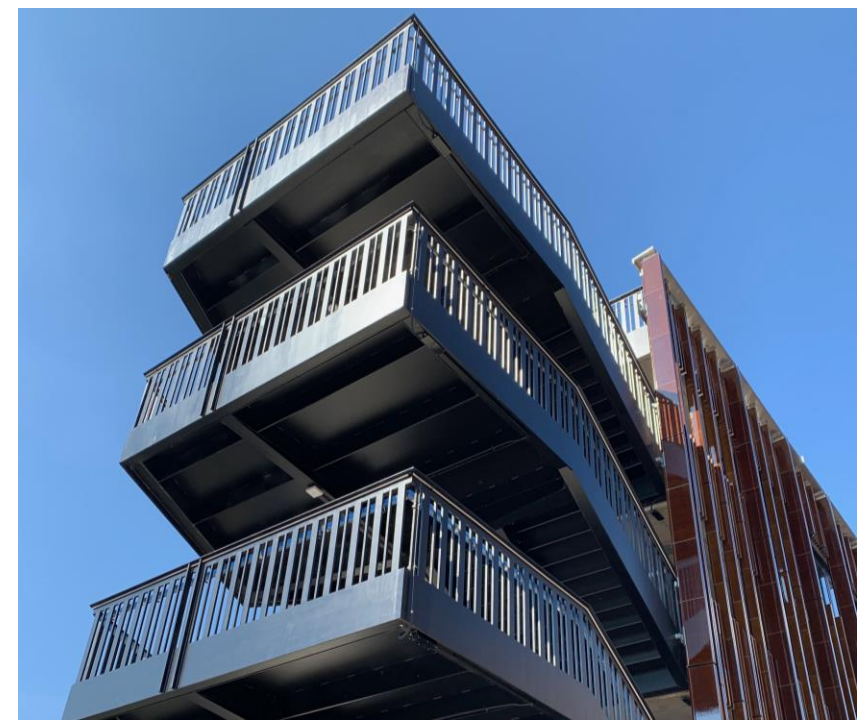
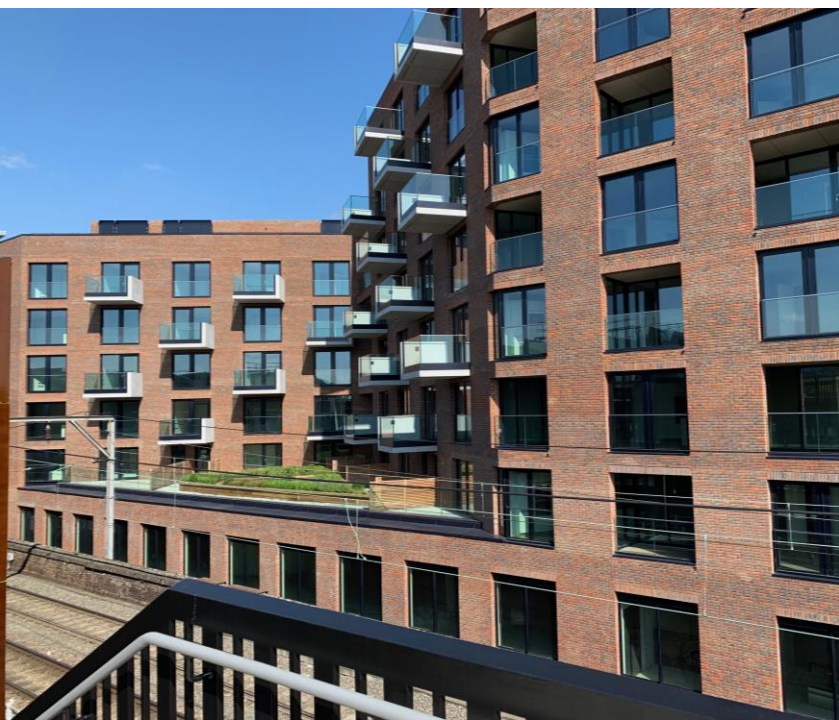
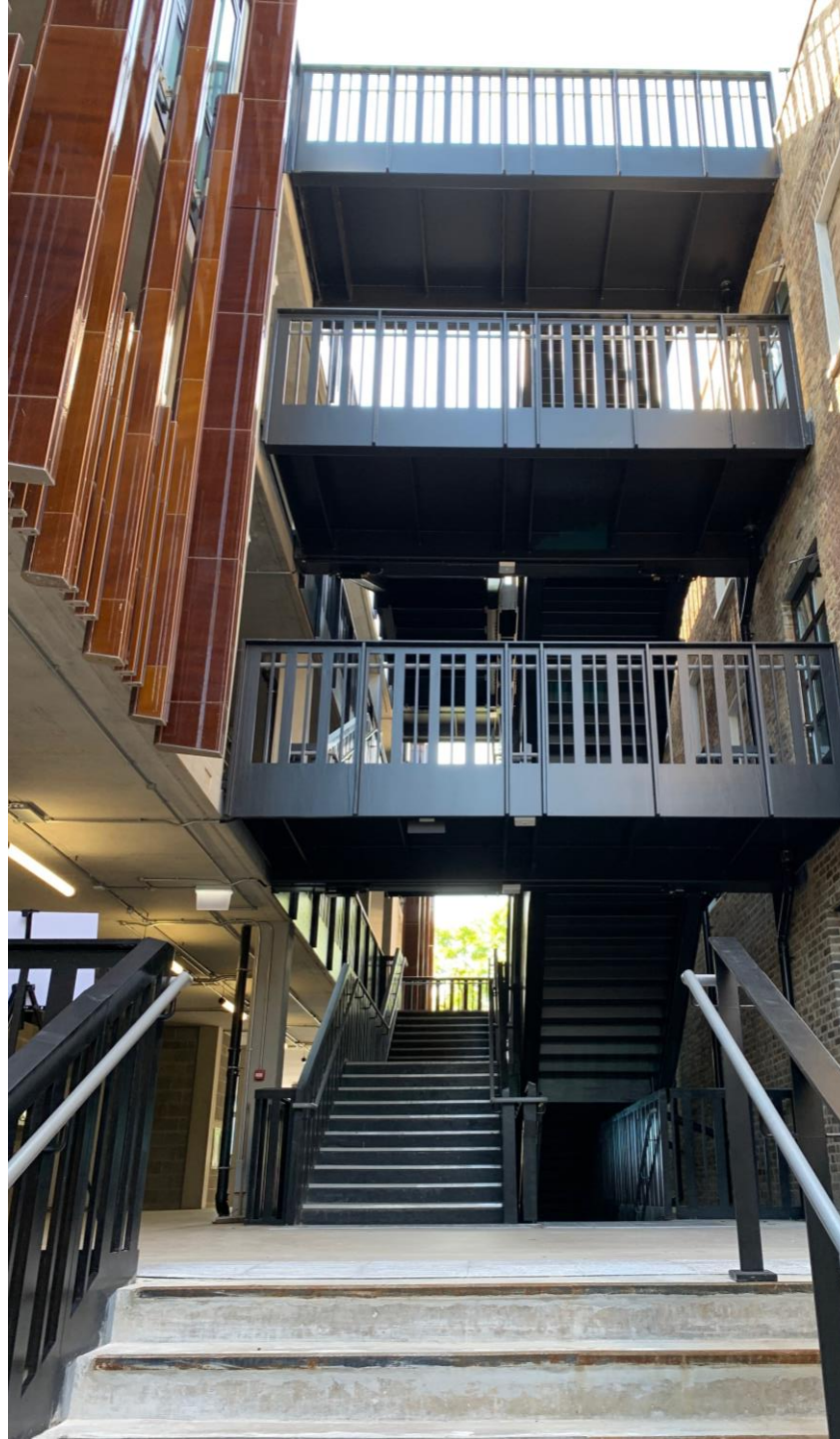
CASE STUDY — CAMDEN LOCK VILLAGE

CLIENT	MACE
COMMENCED	FEB 18
COMPLETED	MAY 19
SCOPE	STRUCTURAL BALCONIES, STAIRS & BALUSTRADE
PACKAGE VALUE	£1.5M
LOCATION	LONDON
CONTACT	FILIPPO MANCUSO 07841 827426

[FILIPPO.MANCUSO@MACEGROUP.COM](mailto:filippo.mancuso@macegroup.com)







CASE STUDY — NATIONAL AUTOMOTIVE INNOVATION CENTRE

CLIENT BALFOUR BEATTY
MAJOR PROJECTS

COMMENCED JUN 17

COMPLETED JUL 18

SCOPE ROOF PLANT
ENCLOSURE,
BALUSTRADE &
SECONDARY STEEL

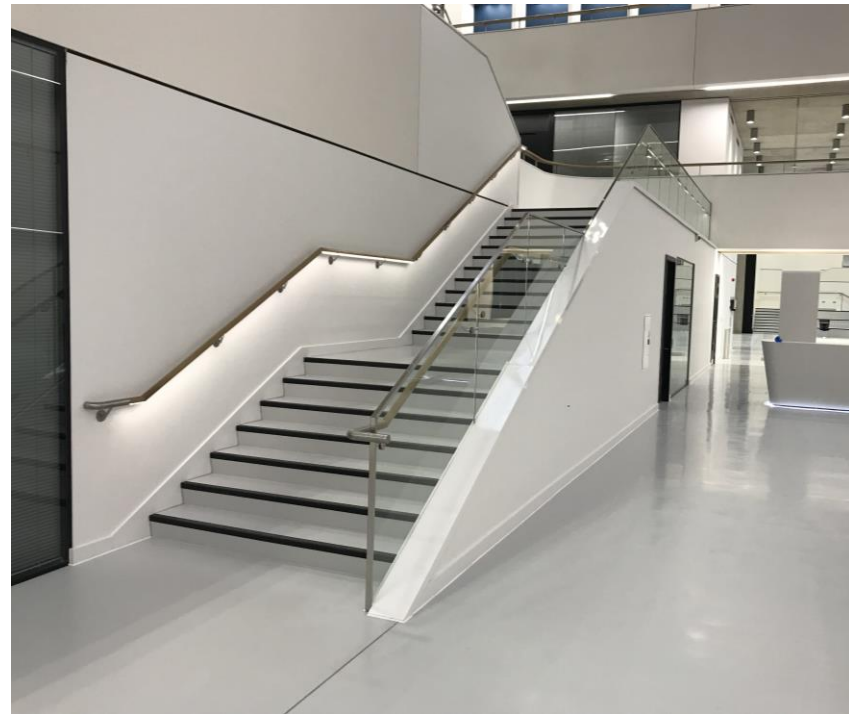
PACKAGE
VALUE £2M

LOCATION WARWICK

CONTACT JONATHAN PAGE
07795 062030
JONATHAN.PAGE@
BALFOURBEATTY.COM



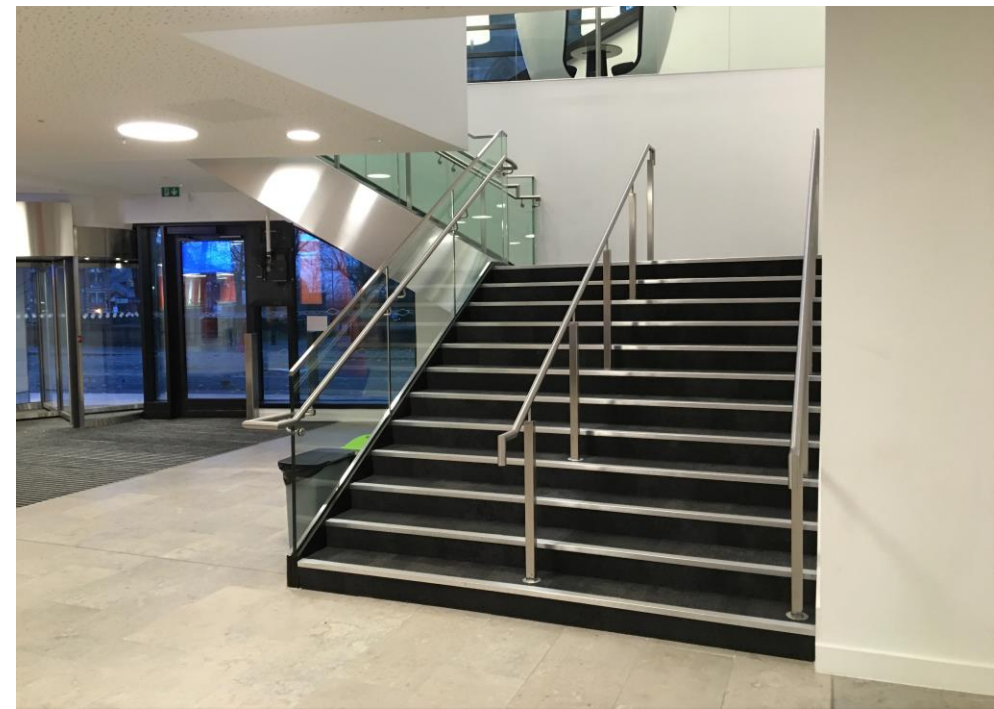


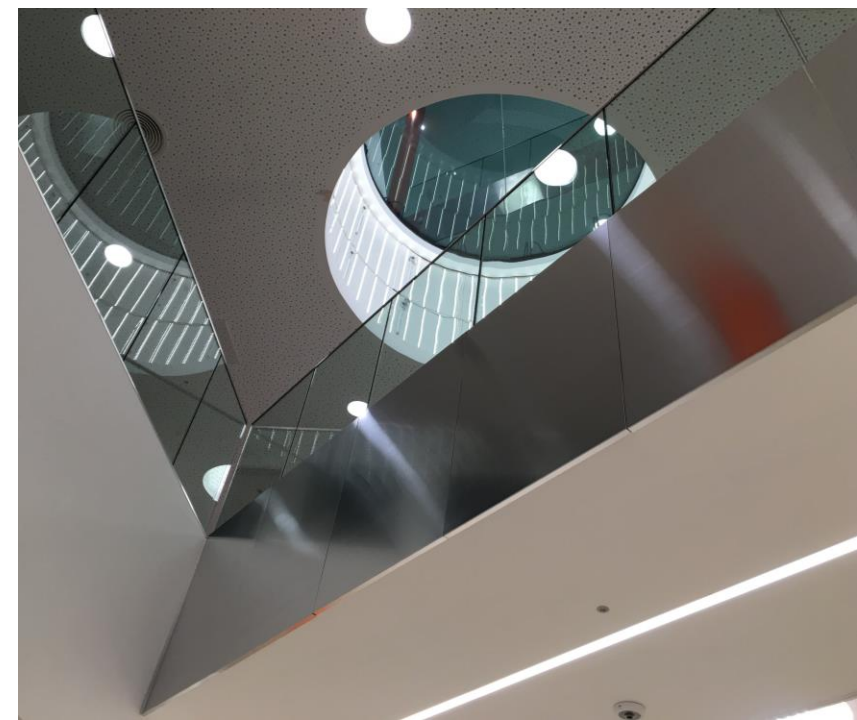
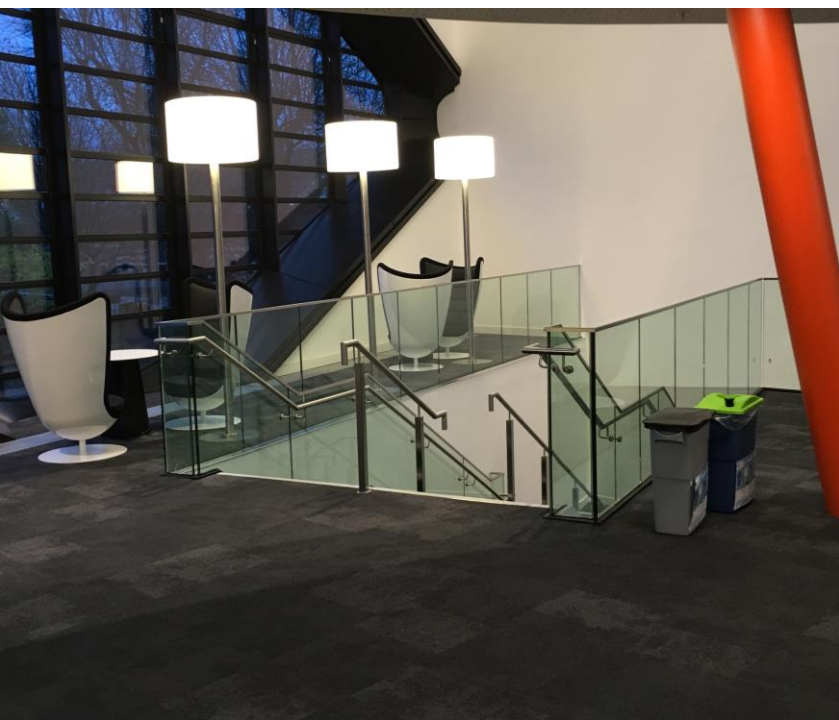


CASE STUDY — DIAMOND BUILDING

CLIENT	BALFOUR BEATTY MAJOR PROJECTS
COMMENCED	APR 17
COMPLETED	MAR 18
SCOPE	STAIRS & BALUSTRADE
PACKAGE VALUE	£1.3M
LOCATION	SHEFFIELD
CONTACT	JONATHAN PAGE 07795 062030 JONATHAN.PAGE@ BALFOURBEATTY.COM



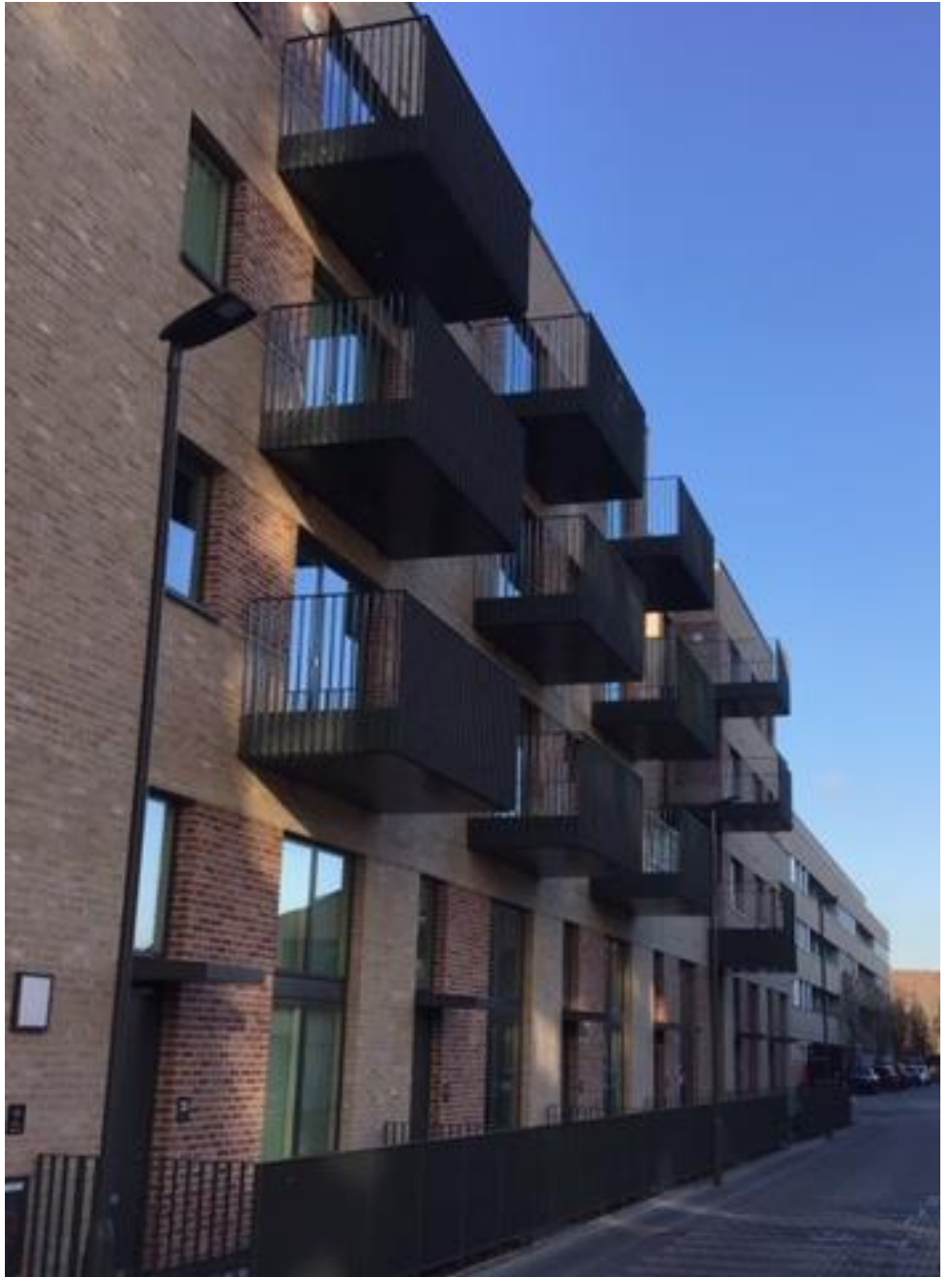


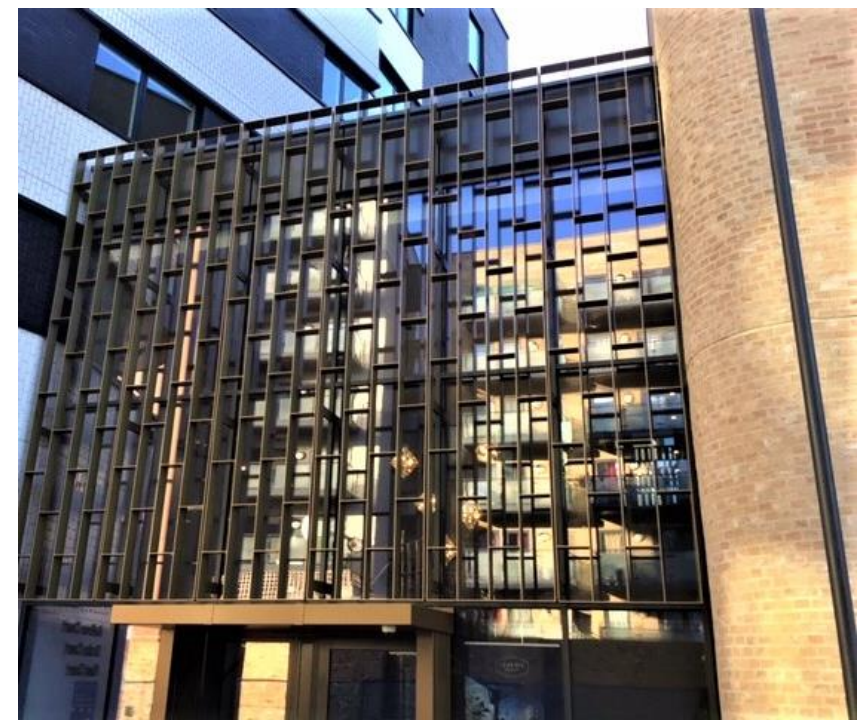


CASE STUDY — HOUNSLOW HOUSE

CLIENT	BENNETT
COMMENCED	OCT 18
COMPLETED	MAR 20
SCOPE	BALCONY BALUSTRADE, STAIRS, DOORS, FAÇADE & RAILINGS
PACKAGE VALUE	£1M
LOCATION	LONDON







CASE STUDY — BT - THREE SNOWHILL

CLIENT	BAM
COMMENCED	MAY 19
COMPLETED	JAN 20
SCOPE	STAIRS, BALUSTRADE & SECONDARY STEEL
PACKAGE VALUE	£0.5M
LOCATION	BIRMINGHAM
CONTACT	CIARAN HEARN 0121 236 9800 CHEARN@BAM.CO.UK





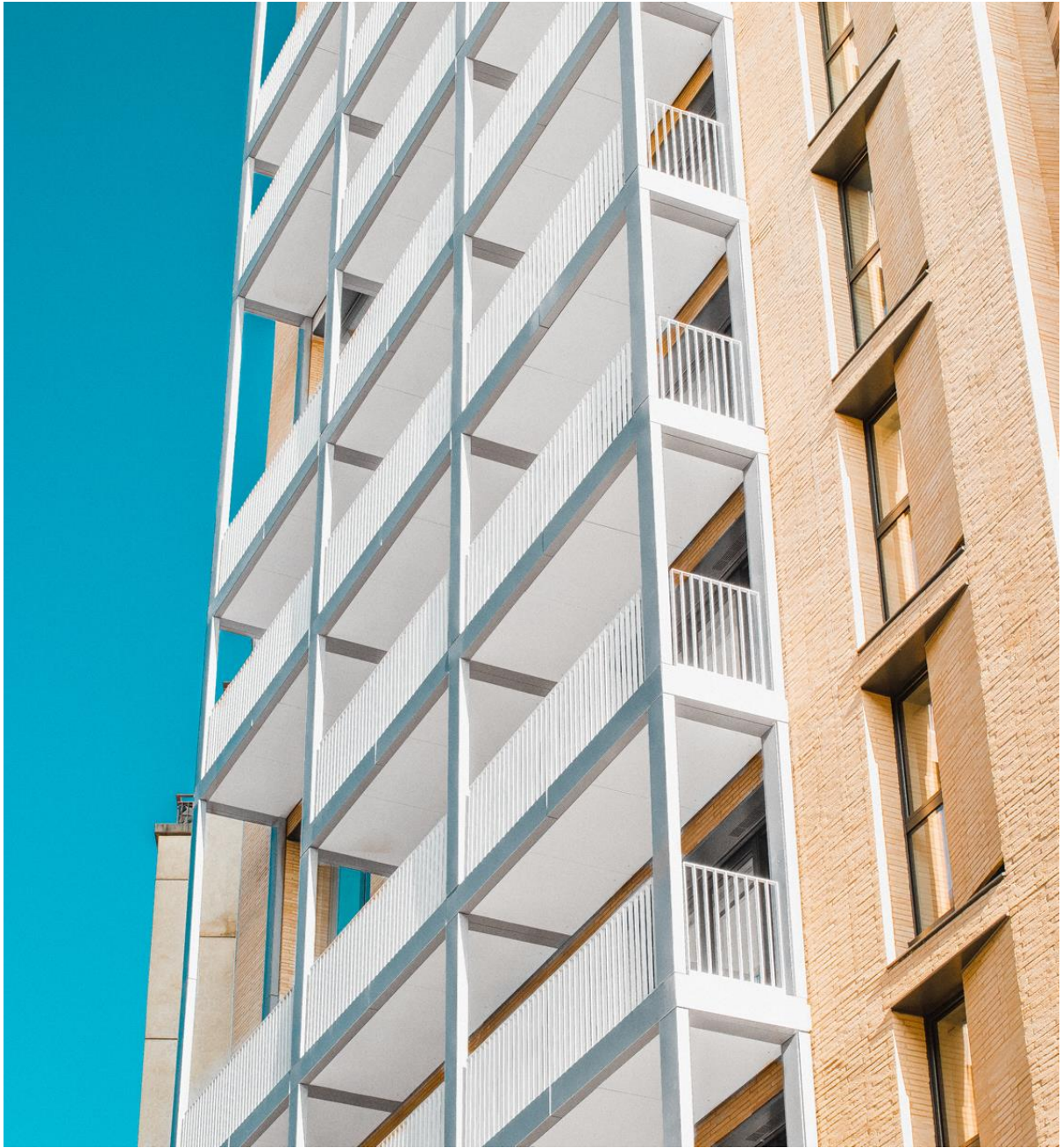




CASE STUDY — SOUTHWARK STREET

CLIENT	RI DESIGN & BUILD
COMMENCED	NOV 18
COMPLETED	MAR 19
SCOPE	HIGH RISE STRUCTURAL BALCONIES
PACKAGE VALUE	£400K
LOCATION	CENTRAL LONDON
CONTACT	DAVE SCANNELL 07749 312973



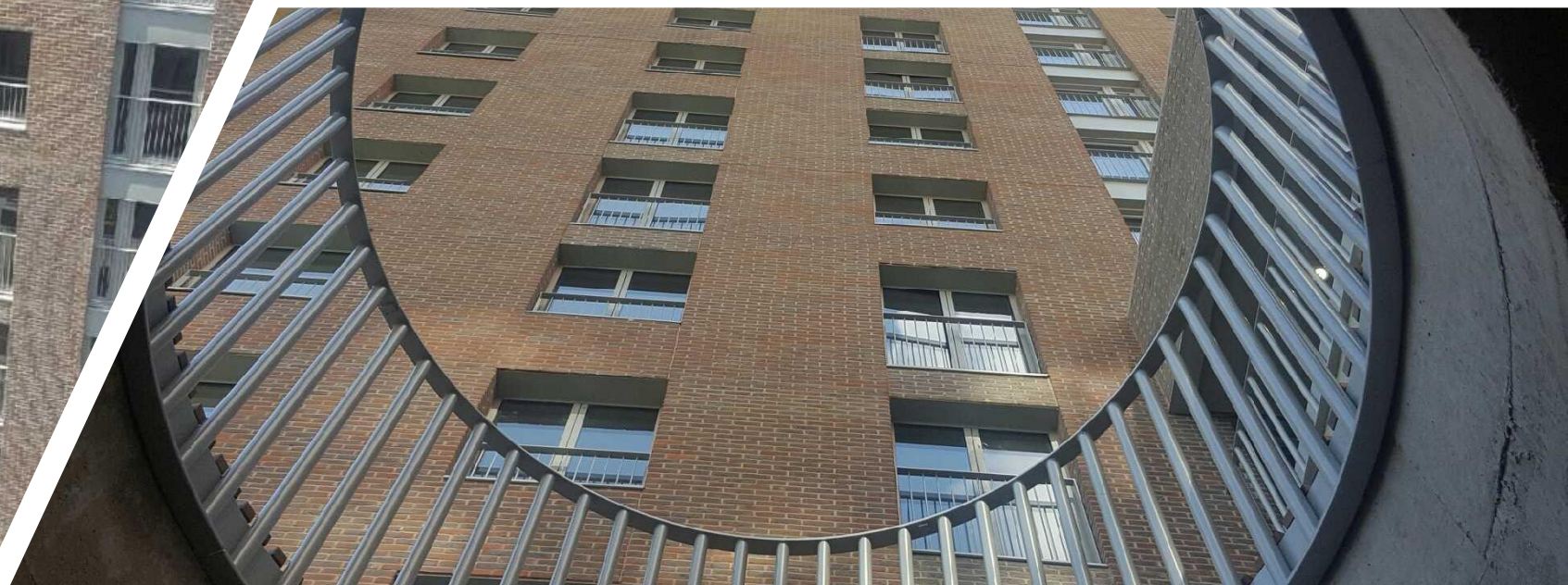
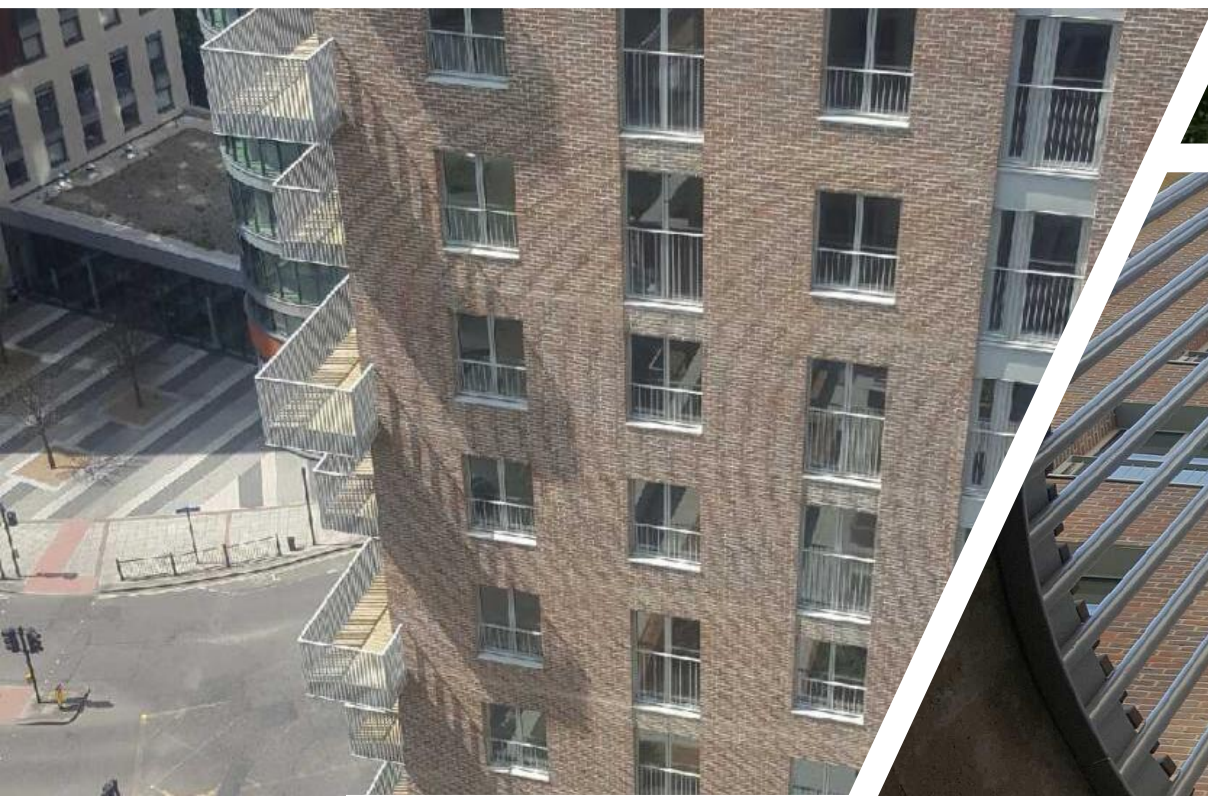


CASE STUDY — ST ANN'S RESIDENTIAL

CLIENT	HENRY
COMMENCED	FEB 18
COMPLETED	SEP 18
SCOPE	BALCONY BALUSTRADE
PACKAGE VALUE	£300K
LOCATION	LONDON
CONTACT	JOHN SHEEHY 07979 853912

JSHEEHY@HENRYCONSTRUCTION.CO.UK



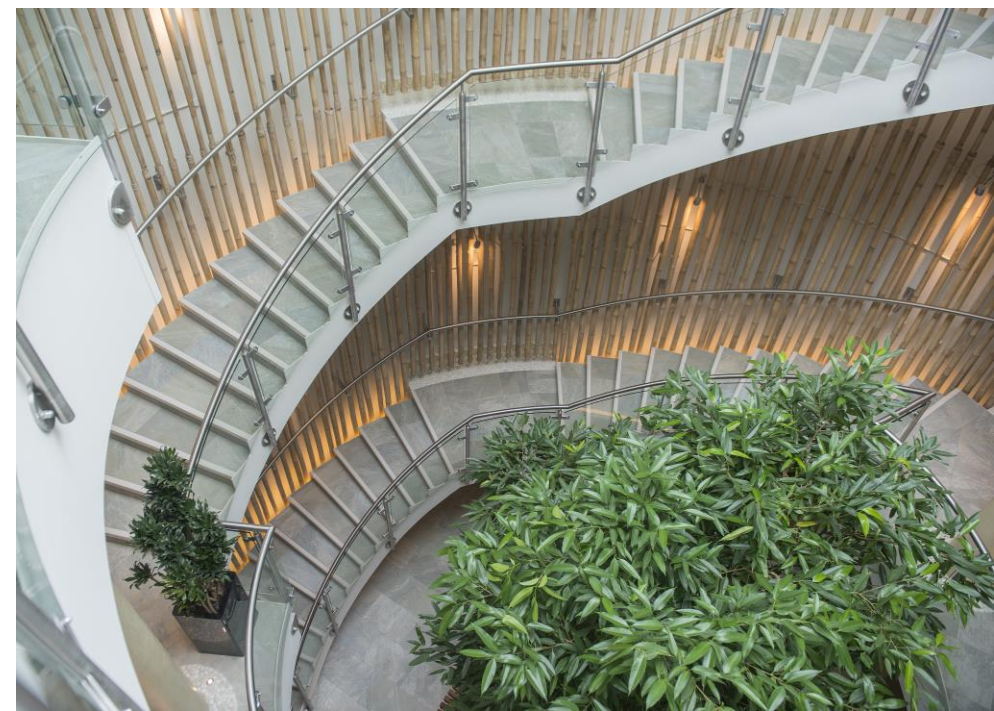


CASE STUDY — CENTER PARCS

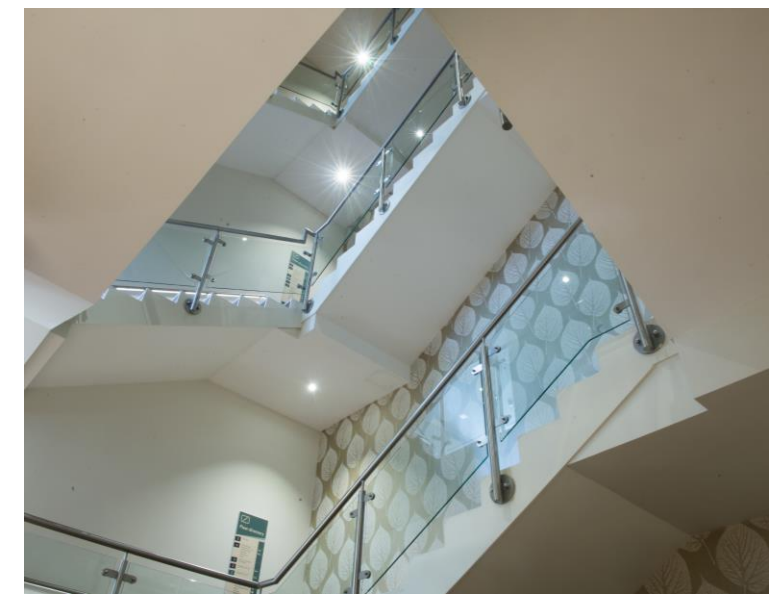
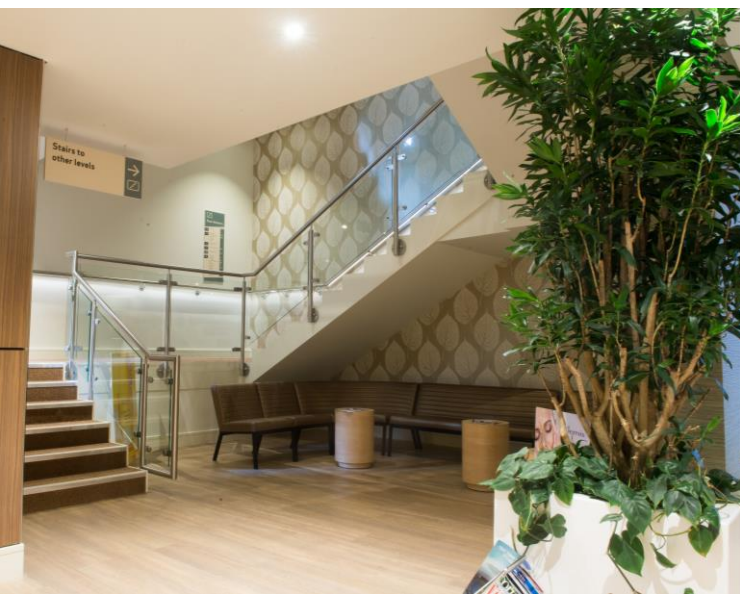
CLIENT	B & K
COMMENCED	JUL 13
COMPLETED	JUN 14
SCOPE	STAIRS & BALUSTRADE
PACKAGE VALUE	£1M
LOCATION	MILTON KEYNES
CONTACT	NICK MCQUAID 07824 691909











CASE STUDY — EXTRA CARE FLATS

CLIENT	KEEPMOAT
COMMENCED	MAR 13
COMPLETED	FEB 14
SCOPE	CANTILEVERED BALCONIES
PACKAGE VALUE	£600K
LOCATION	TADCASTER





CASE STUDY — THURROCK NATURE RESERVE

CLIENT	VINCI
COMMENCED	SEP 13
COMPLETED	MAR 14
SCOPE	GALVANISED BALUSTRADE & STEELWORK
PACKAGE VALUE	£250K
LOCATION	THURROCK





CASE STUDY — UTC BUILDING

CLIENT	WATES
COMMENCED	FEB 14
COMPLETED	JUN 14
SCOPE	STAIRS, ATRIUM BALUSTRADE, CANOPY
PACKAGE VALUE	£200K
LOCATION	SHEFFIELD
CONTACT	KIERAN MCCALL 07824 499112 KIERAN.MCCALL@WATES.CO.UK





CASE STUDY — UPPINGHAM SCHOOL

CLIENT	B & K
COMMENCED	JAN 14
COMPLETED	MAY 14
SCOPE	STAIRS & BALUSTRADE
PACKAGE VALUE	£150K
LOCATION	RUTLAND







CASE STUDY — ECHO BUILDING

CLIENT	LINDUM
COMMENCED	MAR 11
COMPLETED	SEP 11
SCOPE	STAIRS & BALUSTRADE
PACKAGE VALUE	£200K
LOCATION	LINCOLN



